

WOOD MOISTURE METER WIP-22D

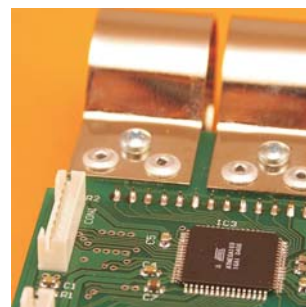


APPLICATION

Wood Moisture Meter WIP-22D is an electronic device designed for quick and easy measurement of moisture contents in wood. It is mainly used in furniture and wood industries. Its non-damaging way of measuring makes it especially useful for measurements of finished wood products.

DESIGN

The device measures the dielectric constant (SIC) of the material. The wood is penetrated by electromagnetic field generated by the device. The Moisture Meter is equipped with knobs for setting the density and thickness of the wood. It can be used to measure wood planks 10 mm to 60 mm thick and of density within the range of 0.3 to 1.1 g/cm³.



TECHNICAL DATA

Range	4% - 60% moisture contents
Thickness of layer measured	60 mm
Resolution	0.1%
Display	LCD, 12.7 mm
Settings range density thickness	0.3 - 1.1 g/cm ³ 10 - 60 mm
Min. settings step density thickness	0.02 g/cm ³ 2 mm
Power	9V, battery 6F22
Battery life	approx. 5000 measurements
Low bat signal	yes
Size instrument case	165 x 80 x 33 mm 270 x 180 x 55 mm
Guarantee	12 months



TANEL ELECTRONICS, POLAND, 44-100 GLIWICE, KOPERNIKA 121
tel./fax +48-32-2381615, info@tanel.com.pl, http://www.tanel.com.pl/